



## Embrace the Elements Mug Rugs Pattern™



### Materials:

- **YARN:** Paintbox Cotton Aran (Light) Worsted Weight 4 yarn, (100% cotton, 1.7 oz/50 g, 93 yds/85 m)
- **YARDAGE:** 40-50 yds per Mug Rug
- **SAMPLES:** Paper White, Marine Blue, Pansy Purple, Lime Green, Red Wine
- **HOOK:** US G/6 4.0/4.25 mm
- Yarn needle, Scissors

**Experience Level:** Intermediate

**Gauge:** 16 rows sc x 19 sc = 4" x 4"

*Gauge is not very important.*

**Sizing:** 5.75" tall x 5.5" wide

### Pattern Key:

ch(s) - chain(s)

sl st - slip stitch

sc - single crochet

MC - Main Color (Background/Color)

CC - Contrast Color (Symbol/White)

### Special Stitches:

**Tapestry Charts:** p. 3-4

**Colorblock Directions:** p. 7-9

**Tapestry Color Changes:** To change colors from MC to CC, complete the number of stitches in MC indicated by the pattern, stopping at the last stitch. For last sc of MC, insert hook and pull up a loop as usual. Drop the MC and pick up the CC yarn, yo and pull through both loops on the hook with CC, to complete the sc st. Repeat process for each color change.

### Notes:

- Read through the entire pattern first.
- Tapestry crochet is worked back and forth in rows. Carry the non-working along throughout the tapestry, crocheting around non-working yarn.
- Try to keep an even tension. Blocking is highly recommended.
- Odd rows are Right side (RS). Even rows are Wrong side (WS).
- Chart is worked from bottom to top. Work Right to Left on odd rows (RS), and Left to Right on even rows (WS).
- Instead of a beginning chain 1, pull up the working loop when creating 1st st of each row. This creates an edge for your tapestry that is straight and more even.
- Pattern instructions are written with the color MC/CC in parentheses followed by the number of stitches in that color. The rows are all worked single crochet. **Ex.** (MC) x 4, (CC) x 12, (MC) x 4, = 4 sc in Main, 12 sc in Contrast, 4 sc in Main.



## ***Pattern Directions:***

### **WATER OR FIRE SYMBOL MUG RUG:**

- **MC** = Marine Blue or Red Wine **CC** = Paper White
- Carry the non-working yarn throughout design, working around it for each stitch.
- Odd Rows are RS (Right Side), Even Rows are WS (Wrong Side). You may want to mark the RS around Row 3 or 5 to make it easier to keep track while working.
- ← and → indicate the direction each row will be worked.
- Do NOT ch 1 at the beginning of each row.

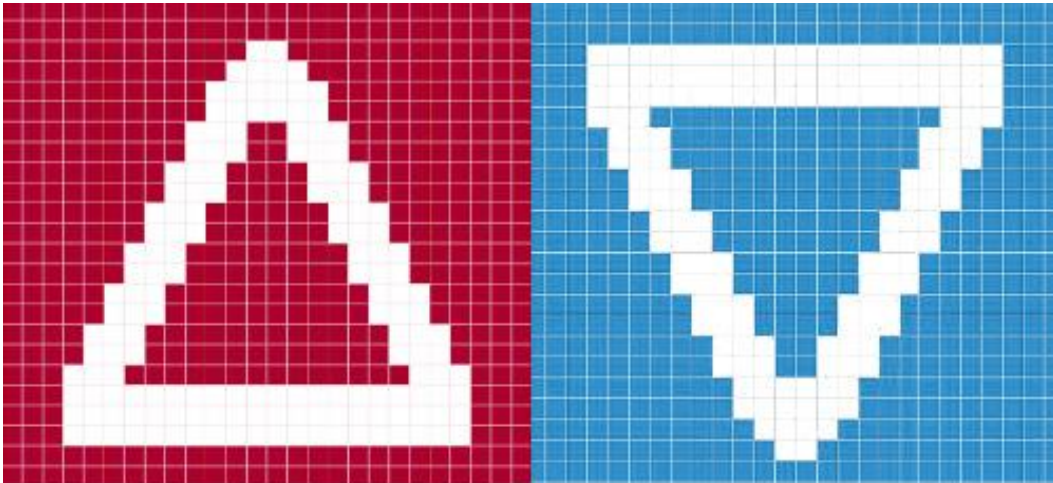
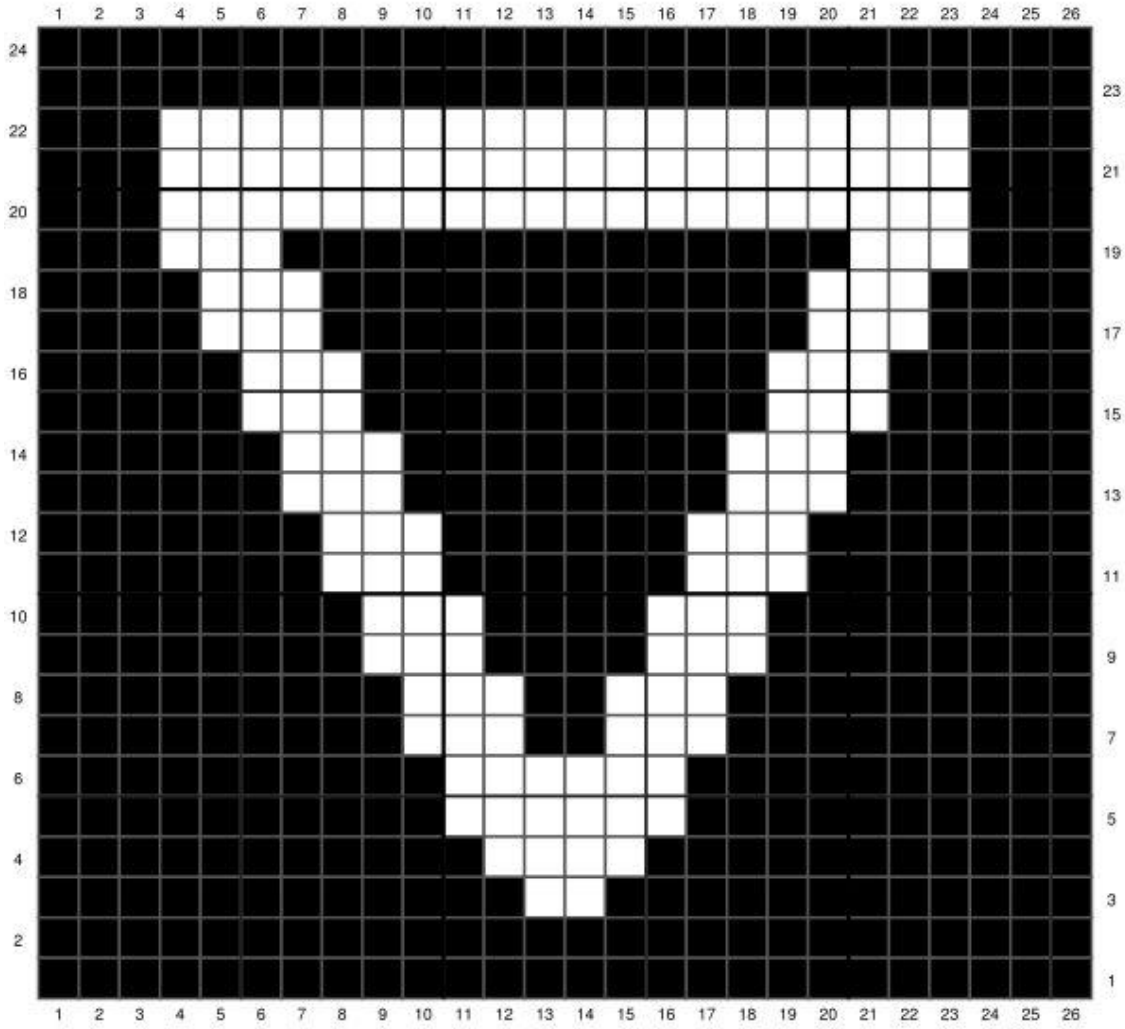
**Begin with MC, ch 27 working 1st st of Row 1 into 2nd ch from hook.**

- ← **Row 1 [RS]:** (MC) x 26
- **Row 2 [WS]:** (MC) x 26
- ← **Row 3 [RS]:** (MC) x 12, (CC) x 2, (MC) x 12
- **Row 4 [WS]:** (MC) x 11, (CC) x 4, (MC) x 11
- ← **Row 5 [RS]:** (MC) x 10, (CC) x 6, (MC) x 10
- **Row 6 [WS]:** (MC) x 10, (CC) x 6, (MC) x 10
- ← **Row 7 [RS]:** (MC) x 9, (CC) x 3, (MC) x 2, (CC) x 3, (MC) x 9
- **Row 8 [WS]:** (MC) x 9, (CC) x 3, (MC) x 2, (CC) x 3, (MC) x 9
- ← **Row 9 [RS]:** (MC) x 8, (CC) x 3, (MC) x 4, (CC) x 3, (MC) x 8
- **Row 10 [WS]:** (MC) x 8, (CC) x 3, (MC) x 4, (CC) x 3, (MC) x 8
- ← **Row 11 [RS]:** (MC) x 7, (CC) x 3, (MC) x 6, (CC) x 3, (MC) x 7
- **Row 12 [WS]:** (MC) x 7, (CC) x 3, (MC) x 6, (CC) x 3, (MC) x 7
- ← **Row 13 [RS]:** (MC) x 6, (CC) x 3, (MC) x 8, (CC) x 3, (MC) x 6
- **Row 14 [WS]:** (MC) x 6, (CC) x 3, (MC) x 8, (CC) x 3, (MC) x 6
- ← **Row 15 [RS]:** (MC) x 5, (CC) x 3, (MC) x 10, (CC) x 3, (MC) x 5
- **Row 16 [WS]:** (MC) x 5, (CC) x 3, (MC) x 10, (CC) x 3, (MC) x 5
- ← **Row 17 [RS]:** (MC) x 4, (CC) x 3, (MC) x 12, (CC) x 3, (MC) x 4
- **Row 18 [WS]:** (MC) x 4, (CC) x 3, (MC) x 12, (CC) x 3, (MC) x 4
- ← **Row 19 [RS]:** (MC) x 3, (CC) x 3, (MC) x 14, (CC) x 3, (MC) x 3
- **Row 20 [WS]:** (MC) x 3, (CC) x 20, (MC) x 3
- ← **Row 21 [RS]:** (MC) x 3, (CC) x 20, (MC) x 3
- **Row 22 [WS]:** (MC) x 3, (CC) x 20, (MC) x 3
- ← **Row 23 [RS]:** (MC) x 26
- **Row 24 [WS]:** (MC) x 26

**Total:** (MC) x 468, (CC) x 156 - **Do not cut MC. Continue with border on p. 6.**



# Embrace the Elements Mug Rugs Tapestry Crochet Pattern™

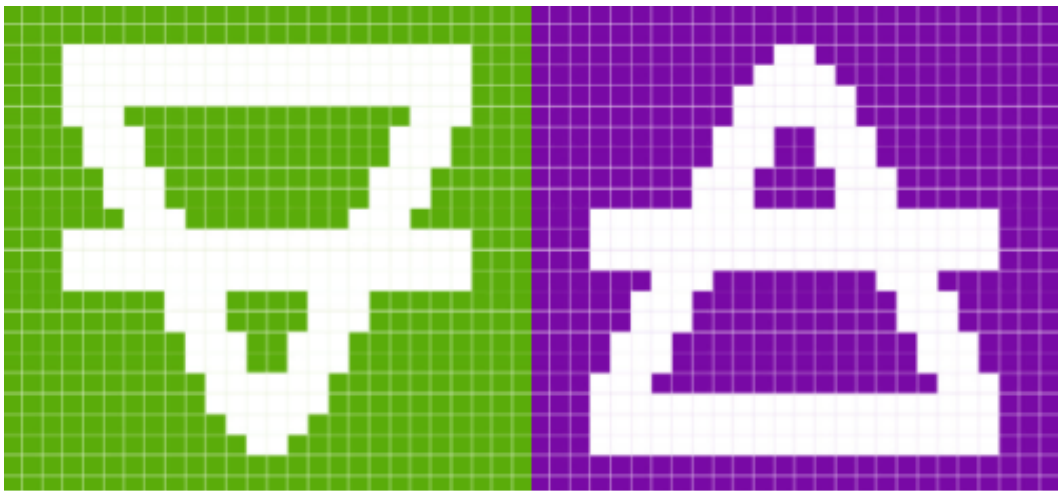
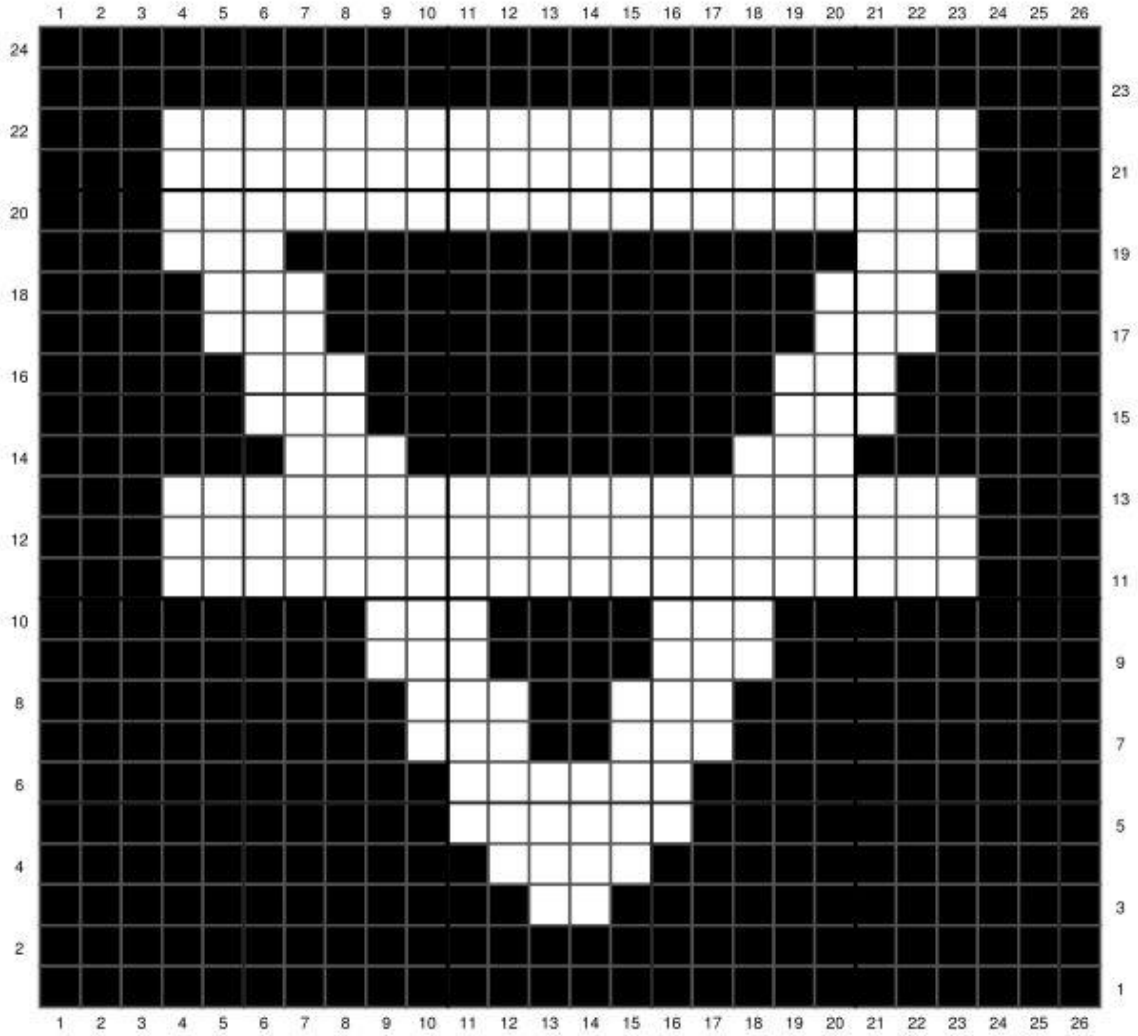


**FIRE** ↻ **WATER**

[GreenFoxFarmsDesigns.com](http://GreenFoxFarmsDesigns.com) - [Ravelry](https://www.ravelry.com) - [Etsy](https://www.etsy.com)  
[Facebook](https://www.facebook.com) - [Instagram](https://www.instagram.com) - [Pinterest](https://www.pinterest.com)



# Embrace the Elements Mug Rugs Tapestry Crochet Pattern™



**EARTH** ↻ **AIR**

[GreenFoxFarmsDesigns.com](http://GreenFoxFarmsDesigns.com) - [Ravelry](https://www.ravelry.com) - [Etsy](https://www.etsy.com)  
[Facebook](https://www.facebook.com) - [Instagram](https://www.instagram.com) - [Pinterest](https://www.pinterest.com)





## EARTH OR AIR SYMBOL MUG RUG:

- **MC** = Lime Green or Pansy Purple **CC** = Paper White
- Carry the non-working yarn throughout design, working around it for each stitch.
- Odd Rows are RS (Right Side), Even Rows are WS (Wrong Side). You may want to mark the RS around Row 3 or 5 to make it easier to keep track while working.
- ← and → indicate the direction each row will be worked.
- Do NOT ch 1 at the beginning of each row.

**Begin with MC, ch 27 working 1st st of Row 1 into 2nd ch from hook.**

- ← **Row 1 [RS]:** (MC) x 26
- **Row 2 [WS]:** (MC) x 26
- ← **Row 3 [RS]:** (MC) x 12, (CC) x 2, (MC) x 12
- **Row 4 [WS]:** (MC) x 11, (CC) x 4, (MC) x 11
- ← **Row 5 [RS]:** (MC) x 10, (CC) x 6, (MC) x 10
- **Row 6 [WS]:** (MC) x 10, (CC) x 6, (MC) x 10
- ← **Row 7 [RS]:** (MC) x 9, (CC) x 3, (MC) x 2, (CC) x 3, (MC) x 9
- **Row 8 [WS]:** (MC) x 9, (CC) x 3, (MC) x 2, (CC) x 3, (MC) x 9
- ← **Row 9 [RS]:** (MC) x 8, (CC) x 3, (MC) x 4, (CC) x 3, (MC) x 8
- **Row 10 [WS]:** (MC) x 8, (CC) x 3, (MC) x 4, (CC) x 3, (MC) x 8
- ← **Row 11 [RS]:** (MC) x 3, (CC) x 20, (MC) x 3
- **Row 12 [WS]:** (MC) x 3, (CC) x 20, (MC) x 3
- ← **Row 13 [RS]:** (MC) x 3, (CC) x 20, (MC) x 3
- **Row 14 [WS]:** (MC) x 6, (CC) x 3, (MC) x 8, (CC) x 3, (MC) x 6
- ← **Row 15 [RS]:** (MC) x 5, (CC) x 3, (MC) x 10, (CC) x 3, (MC) x 5
- **Row 16 [WS]:** (MC) x 5, (CC) x 3, (MC) x 10, (CC) x 3, (MC) x 5
- ← **Row 17 [RS]:** (MC) x 4, (CC) x 3, (MC) x 12, (CC) x 3, (MC) x 4
- **Row 18 [WS]:** (MC) x 4, (CC) x 3, (MC) x 12, (CC) x 3, (MC) x 4
- ← **Row 19 [RS]:** (MC) x 3, (CC) x 3, (MC) x 14, (CC) x 3, (MC) x 3
- **Row 20 [WS]:** (MC) x 3, (CC) x 20, (MC) x 3
- ← **Row 21 [RS]:** (MC) x 3, (CC) x 20, (MC) x 3
- **Row 22 [WS]:** (MC) x 3, (CC) x 20, (MC) x 3
- ← **Row 23 [RS]:** (MC) x 26
- **Row 24 [WS]:** (MC) x 26

**Total:** (MC) x 426, (CC) x 198 - **Do not cut MC. Continue with border on p. 6.**



## ***Finishing Mug Rugs:***

### **MUG RUG BORDER:**

**Side 1:** Ch 1, turn to RS, working along Row 24 of square, sl st in each st across, ch 1 at corner. *Side 1:* (Ch-1, 26 sl st).

**Side 2:** Rotate, working down side of square, 24 sl st spaced evenly down side, ch 1 at corner. *Side 2:* (Ch-1, 24 sl st).

**Side 3:** Rotate, working along beginning chain of square, 26 sl st in each st across, ch 1 at corner. *Side 3:* (Ch-1, 26 sl st).

**Side 4:** Rotate, working up side of square, 24 sl st spaced evenly up side, ch 1 at corner, sl st to join to 1st sl st of border (not a stitch). *Side 4:* (Ch-1, 24 sl st).

**Total:** (4 ch-1 sp, 100 sl st). FO and weave in ends! Grab your fave beverage and enjoy!

## ***Tapestry Crochet Tutorials:***

**Tapestry Color Changes:** To change colors from MC to CC, complete the number of stitches in MC indicated by the pattern, stopping at the last stitch. For the last sc of MC, insert hook and pull up a loop as usual. Drop the MC and pick up the CC yarn, yo and pull through both loops on the hook with CC, to complete the sc st. Repeat the process for each color change.



**Join my VIP list for exclusive Sales, CALs, Events and more!  
PLUS never miss a new pattern!**

<https://greenfoxfarmsdesigns.com/newsletter>

[GreenFoxFarmsDesigns.com](https://www.GreenFoxFarmsDesigns.com) - [Ravelry](https://www.Ravelry.com) - [Etsy](https://www.Etsy.com)  
[Facebook](https://www.Facebook.com) - [Instagram](https://www.Instagram.com) - [Pinterest](https://www.Pinterest.com)



## **COLORBLOCK PATTERN DIRECTIONS:**

### **WATER OR FIRE SYMBOL MUG RUG:**

- Colorblock instructions are written with the number of stitches in that color block. The only stitch used is a single crochet. Ex. 

6	10
---	----

 = work 6 sc in CC, work 10 sc in MC.
- **MC** = Marine Blue or Red Wine **CC** = Paper White
- Carry the non-working yarn throughout design, working around it for each stitch.
- ← and → indicate the direction to work
- Do NOT ch 1 at the beginning of each row.

**Begin with MC, ch 27 working 1st st of Row 1 into 2nd ch from hook.**

← Row 1 [RS]:	<table border="1"><tr><td>26</td></tr></table>	26				
26						
→ Row 2 [WS]:	<table border="1"><tr><td>26</td></tr></table>	26				
26						
← Row 3 [RS]:	<table border="1"><tr><td>12</td><td>2</td><td>12</td></tr></table>	12	2	12		
12	2	12				
→ Row 4 [WS]:	<table border="1"><tr><td>11</td><td>4</td><td>11</td></tr></table>	11	4	11		
11	4	11				
← Row 5 [RS]:	<table border="1"><tr><td>10</td><td>6</td><td>10</td></tr></table>	10	6	10		
10	6	10				
→ Row 6 [WS]:	<table border="1"><tr><td>10</td><td>6</td><td>10</td></tr></table>	10	6	10		
10	6	10				
← Row 7 [RS]:	<table border="1"><tr><td>9</td><td>3</td><td>2</td><td>3</td><td>9</td></tr></table>	9	3	2	3	9
9	3	2	3	9		
→ Row 8 [WS]:	<table border="1"><tr><td>9</td><td>3</td><td>2</td><td>3</td><td>9</td></tr></table>	9	3	2	3	9
9	3	2	3	9		
← Row 9 [RS]:	<table border="1"><tr><td>8</td><td>3</td><td>4</td><td>3</td><td>8</td></tr></table>	8	3	4	3	8
8	3	4	3	8		
→ Row 10 [WS]:	<table border="1"><tr><td>8</td><td>3</td><td>4</td><td>3</td><td>8</td></tr></table>	8	3	4	3	8
8	3	4	3	8		
← Row 11 [RS]:	<table border="1"><tr><td>7</td><td>3</td><td>6</td><td>3</td><td>7</td></tr></table>	7	3	6	3	7
7	3	6	3	7		
→ Row 12 [WS]:	<table border="1"><tr><td>7</td><td>3</td><td>6</td><td>3</td><td>7</td></tr></table>	7	3	6	3	7
7	3	6	3	7		
← Row 13 [RS]:	<table border="1"><tr><td>6</td><td>3</td><td>8</td><td>3</td><td>6</td></tr></table>	6	3	8	3	6
6	3	8	3	6		
→ Row 14 [WS]:	<table border="1"><tr><td>6</td><td>3</td><td>8</td><td>3</td><td>6</td></tr></table>	6	3	8	3	6
6	3	8	3	6		
← Row 15 [RS]:	<table border="1"><tr><td>5</td><td>3</td><td>10</td><td>3</td><td>5</td></tr></table>	5	3	10	3	5
5	3	10	3	5		



## Embrace the Elements Mug Rugs Tapestry Crochet Pattern™

→ Row 16 [WS]:	5	3	10	3	5
← Row 17 [RS]:	4	3	12	3	4
→ Row 18 [WS]:	4	3	12	3	4
← Row 19 [RS]:	3	3	14	3	3
→ Row 20 [WS]:	3	20	3		
← Row 21 [RS]:	3	20	3		
→ Row 22 [WS]:	3	20	3		
← Row 23 [RS]:	26				
→ Row 24 [WS]:	26				
Total:	468	156			

- Do not cut MC. Continue with border on p. 6.

### EARTH OR AIR SYMBOL MUG RUG:

- Colorblock instructions are written with the number of stitches in that color block. The only stitch used is a single crochet. Ex. 

6	10
---	----

 = work 6 sc in CC, work 10 sc in MC.
- **MC** = Lime Green or Pansy Purple **CC** = Paper White
- Carry the non-working yarn throughout design, working around it for each stitch.
- ← and → indicate the direction to work
- Do NOT ch 1 at the beginning of each row.

**Begin with MC, ch 27 working 1st st of Row 1 into 2nd ch from hook.**

← Row 1 [RS]:	26		
→ Row 2 [WS]:	26		
← Row 3 [RS]:	12	2	12
→ Row 4 [WS]:	11	4	11





## Embrace the Elements Mug Rugs Tapestry Crochet Pattern™

← Row 5 [RS]:	10	6	10		
→ Row 6 [WS]:	10	6	10		
← Row 7 [RS]:	9	3	2	3	9
→ Row 8 [WS]:	9	3	2	3	9
← Row 9 [RS]:	8	3	4	3	8
→ Row 10 [WS]:	8	3	4	3	8
← Row 11 [RS]:	3	20	3		
→ Row 12 [WS]:	3	20	3		
← Row 13 [RS]:	3	20	3		
→ Row 14 [WS]:	6	3	8	3	6
← Row 15 [RS]:	5	3	10	3	5
→ Row 16 [WS]:	5	3	10	3	5
← Row 17 [RS]:	4	3	12	3	4
→ Row 18 [WS]:	4	3	12	3	4
← Row 19 [RS]:	3	3	14	3	3
→ Row 20 [WS]:	3	20	3		
← Row 21 [RS]:	3	20	3		
→ Row 22 [WS]:	3	20	3		
← Row 23 [RS]:	26				
→ Row 24 [WS]:	26				
Total:	426	198			

- Do not cut MC. Continue with border on p. 6.

[GreenFoxFarmsDesigns.com](http://GreenFoxFarmsDesigns.com) - [Ravelry](https://www.ravelry.com) - [Etsy](https://www.etsy.com)  
[Facebook](https://www.facebook.com) - [Instagram](https://www.instagram.com) - [Pinterest](https://www.pinterest.com)



# LET'S BE FRIENDS!



<https://www.greenfoxfarmsdesigns.com>



<http://bit.ly/GreenFoxFarmsDesignsNewsletter>



<https://www.ravelry.com/designers/lisa-m-fox>



<https://www.etsy.com/shop/GreenFoxFarmsDesigns>



<https://www.youtube.com/c/GreenFoxFarmsDesigns>



@GreenFoxFarms



/GreenFoxFarms

---

## Original Design by Lisa M Fox:

Thank you for choosing Green Fox Farms Designs! You are welcome to use this pattern to create and sell items created by you. This pattern is not for commercial use. If you sell your items online, please include a link back to my shop. This pattern and the photographs provided for your convenience are my intellectual property. They are protected by copyright and may not be used in any form. You may not share, copy, reproduce, sell or alter this pattern and claim it as your own.

Please DO share your finished work! I would love to see your creations. I have included links to my social media and store pages. When you share your creations, please hashtag with #greenfoxfarms or #greenfoxfarmsdesigns and tag me so I can find your work! Please do not hesitate to contact me with any questions at → [GreenFoxFarmsDesigns@gmail.com](mailto:GreenFoxFarmsDesigns@gmail.com) and I will help you with the pattern!

---

[GreenFoxFarmsDesigns.com](https://www.greenfoxfarmsdesigns.com) - [Ravelry](https://www.ravelry.com) - [Etsy](https://www.etsy.com)  
[Facebook](https://www.facebook.com/GreenFoxFarms) - [Instagram](https://www.instagram.com/GreenFoxFarms) - [Pinterest](https://www.pinterest.com/GreenFoxFarms)